



CDC RECOMMENDED QUESTIONNAIRE FOR BUILDING RE-ENTRY

We at Galaxy are constantly looking to provide tools needed in response to the ever-changing business climate as it relates to COVID-19. We are proud to release our latest offering that follows the recent CDC (Center for Disease Control) questions for employees returning to work. This web-based application covers the standard questions but also allows for custom questions to be inserted. Access control can be disabled within System Galaxy and would require a valid questionnaire response before entry is allowed in the facility. The goal is to have an employee complete this questionnaire on a predetermined schedule, most common is daily. Failure to submit or by answering in an acceptable manner would alert the staff to seek further guidance from a supervisor. The use of this application is free to all existing Galaxy end users. Please contact Galaxy for more information.

COVID-19 SCREENING QUESTIONNAIRE

The safety of our employees is our overriding priority. As the coronavirus (COVID-19) pandemic continues, we are monitoring the situation closely and following the guidance from the Centers for Disease Control and Prevention and local health authorities. In order to prevent the spread of the coronavirus and reduce the potential risk of exposure to our workforce, we are asking everyone to complete and submit this questionnaire prior to entering the worksite. Please do not enter the worksite until your responses have been reviewed and your entry has been approved.

Please respond to each of the following questions truthfully and to the best of your ability. Your participation is important to help us take precautionary measures to protect you and our other employees.

Meredith Aaron

Representations

1) Are you currently experiencing, or have you experienced in the past 14 days, any of the following symptoms? (Please take your temperature before you answer this question.)

No

Yes

Fever (100.4° F/37.8° C or greater as measured by an oral thermometer)

No

Yes

Cough

No

Yes

Shortness of breath or difficulty breathing

No

Yes

Sore throat

No

Yes

New loss of taste or smell

No

Yes

Chills

No

Yes

Head or muscle aches

No

Yes

Nausea, diarrhea, vomiting

2) In the past 14 days, have you been in close proximity to anyone who was experiencing any of the above symptoms or has experienced any of the above symptoms since your contact?

No

Yes

3) In the past 14 days, have you been in close proximity to anyone who has tested positive for COVID-19?

No

Yes

5) Have you have tested positive for COVID-19, or are you presumptively positive for COVID-19 based on your health care provider's assessment or your symptoms?

No

Yes

NOTE: If you have tested positive for COVID-19 or have been presumptively positive for COVID-19 based on your health care provider's assessment or your symptoms, please contact your manager or human resources representative when: (1) you have had no fever for at least 72 hours (3 full days), without the use of fever-reducing medications; (2) your other symptoms have improved, and at least 7 days have elapsed since your symptoms first appeared.

6) In the past 14 days, have you been on a commercial flight or traveled outside of the United States?

No

Yes

7) In the past 14 days, have you been in close proximity to anyone who has been on a commercial flight or traveled outside of the United States?

No

Yes

8) Is there any reason why you feel you are at higher risk of contracting COVID-19 or experiencing complications from COVID-19 by entering the facility? If "yes", please provide a brief explanation

No

Yes

Certification

I hereby certify that the responses provided above are true and accurate to the best of my knowledge.

Note: The information collected on this form will be used to determine only whether you may be infected with COVID-19. The information on this form will be maintained as confidential. Any questions should be directed to your manager or your human resources representative.

Your submission has not been approved. Contact your supervising manager for further instructions.

Submit Form

6) In the past 14 days, have you been on a commercial flight or traveled outside of the United States?

No

Yes

7) In the past 14 days, have you been in close proximity to anyone who has been on a commercial flight or traveled outside of the United States?

No

Yes

8) Is there any reason why you feel you are at higher risk of contracting COVID-19 or experiencing complications from COVID-19 by entering the facility? If "yes", please provide a brief explanation

No

Yes

Certification

I hereby certify that the responses provided above are true and accurate to the best of my knowledge.

Note: The information collected on this form will be used to determine only whether you may be infected with COVID-19. The information on this form will be maintained as confidential. Any questions should be directed to your manager or your human resources representative.

Your submission has been approved. Your access permissions have been enabled.

Submit Form



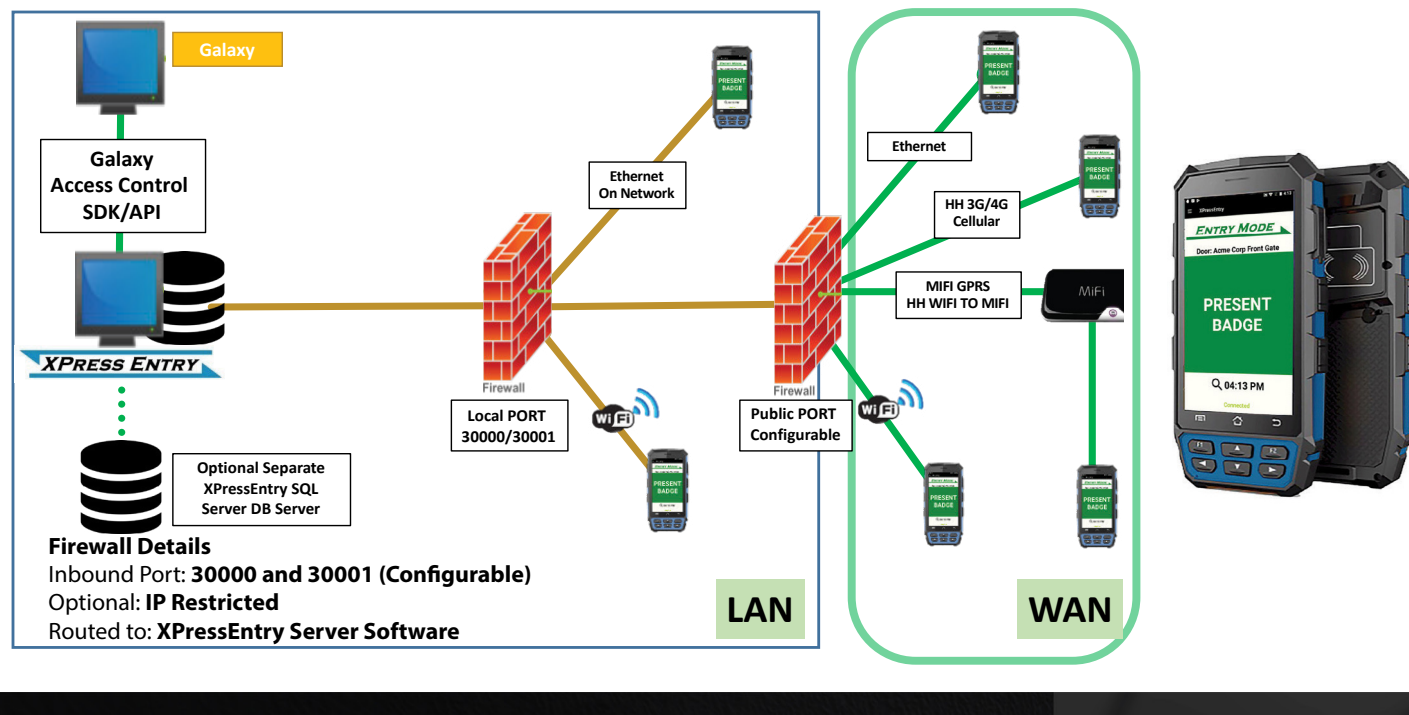
PORTABLE ACCESS CONTROL ENFORCEMENT

This operational setup requires all employees and visitors to pass through a screening area, such as a check-in tent, before entering.

1. Temperatures of those screened will be taken & recorded. Cardholders/visitors with elevated temperatures will not be allowed access into the facility.
2. Those that are pass screening will have free access according to their assigned access group(s).
3. At midnight, all cardholders who were allowed access that day will be reset to 'Unknown Status' thereby forcing another screening to enter the following day using the same procedure.



NETWORK ARCHITECTURE



IXM TITAN WITH ENHANCEMENT KIT

Face Recognition. Temperature Detection. Touchless.

- Visitor Temperature Screening
- Employee Fever Screening
- Temperature Based Access Control
- Biometric Time Tracking of Employees
- Biometric Access Control

Invixium's flagship IXM TITAN now supports advanced temperature screening with the new Enhancement Kit. An intelligent dual-camera solution, TITAN with the Enhancement Kit performs simultaneous face recognition and temperature screening of employees and visitors to touchless access control and workforce management. Get back to work safely with Invixium's innovative solution to protect the health and safety of your enterprise and personnel.

- Additional features:
- Temperature screening accuracy within +/- 0.5 °C (0.9 °F)
 - User capacity of 100,000 (1:N) with recognition speed of 15-18 faces per minute
 - Industrial grade construction with 5.0" touchscreen, Wiegand, OSDP2 compliance, Tamper, LED panel feedback
 - Generate data-driven temperature reports via IXM Health, IXM WEB's latest licensed feature, to monitor enterprise health

For more information, visit: www.invixium.com

TECH TIPS

Ransomware Threat Sometimes a Backup is not enough.

In a ransomware attack malicious code is inserted into a network. When executed, it changes passwords and encrypts files rendering systems unusable. Even backup files might become useless. Consider offering an off-site backup option.

New process for up/downloading database files.

Galaxy is introducing a new process for uploading and retrieving database files to further increase the security. The process begins the same as always by getting an RMA number from Galaxy Technical Support and naming the files to be uploaded using the RMA number. The requester will receive an email with instructions and a password that will allow access to the upload site. When the database work is finished, we will place the files in a folder named "Completed" that can be accessed using the same secure method.

Note on installing with EPI

As of SG version 11.3, we are no longer automatically installing EPI since most sites do not use it. For sites that still do, the installer has created an SG_For_EPI folder. The files in this folder must be moved to the main System Galaxy folder. Make a shortcut from the new System Galaxy executable file to replace the one on the computer Desktop. Also run the Setup executable in the EPI Builder Run-Time directory.

AC Fail/Low Battery/Tamper Messages The 635 CPU has terminals for AC Failure, Low Battery, and Tamper circuits. From the Factory, only the Tamper is connected to the Tamper Switch on the controller enclosure. An Open circuit will cause an AC Fail & Low Battery message whenever the CPU is reset or loses power. New CPU boards are shipping with jumpers completing the AC Fail and Low Battery circuits, but older boards do not.

Coming Soon – System Galaxy 11.6

Upgraded SQL Server Express install from 2014 to 2019 o This eliminates installation on OS prior to Windows 10 and Windows Server 2016

Latest flash has enhanced Denial of Service DOS attack protection.

New Enhanced Configuration Tool for 635 CPU boards

TRAINING DATES

SG HELP WEBSITE

2020 EVENTS

PREVIOUS NEWSLETTERS

galaxysys.com info@galaxysys.com 800.445.5560