

B100PROX-EH-SA

STANDALONE BIOMETRIC READER WITH PROXIMITY CARD READER.

B100PROX-EH-SA is a simple one-door standalone biometric and proximity system (or 2 doors when used with DINRTT). The reader programming is quick and easy. It can store up to 98 fingerprints and 2000 proximity cards. It has one integrated relay output and one exit button input.

If secure installation is needed, the reader can be connected to a remote relay unit in a secured area, which also plays the role of exit push button.

Complete setup and programming can be done by swiping the finger on the sensor.

It can read EM 4100 or HID compatible cards.



FEATURES

- Power supply: 12V DC, 150mA
- Capacity: 98 Fingerprints and 2000 Cards
- Output: One relay NO/NC contacts
- Output maximum current: 2A, 24V AC/DC
- Push button input: Yes
- Door time: Pulse (1-30 s) or Toggle(ON/OFF)
- Entry mode: Finger or Card
- Sensor: Swipe capacitive
- Card reader mode: EM4100 or HID compatible
- Read range: 2-5 cm
- Programming: By Master finger
- Admin/Installer fingers: 1 Admin and 1 Installer finger
- Backlight ON/OFF: Yes
- Buzzer ON/OFF: Yes
- Indication: Tricolor status LED
- Mounting: Surface mount
- IP factor: IP65
- Operating temperature: -15°C to +50°C, non condensing
- Dimensions (mm): 100W x 94L x 30D

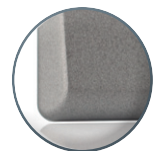
Compatible devices: RTT, DINRTT, RU2

COLOURS



B100PROXS-EH-SA

Silver



B100PROXC-EH-SA

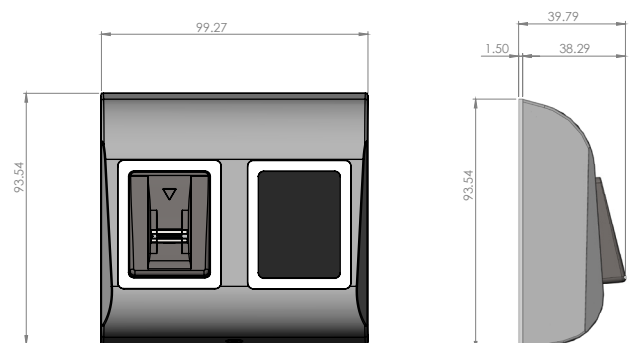
Charcoal



B100PROXW-EH-SA

White

DIMENSIONS

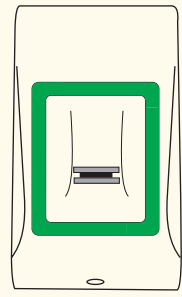


FOBS & CARDS

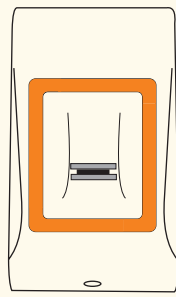
EM Fobs & Cards



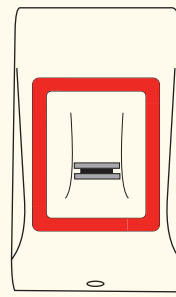
Ref.	PBX-1E	PBX-1C	PBX-2	PBX-2C
Features	ABS Keyfob EM4100	Leather Keyfob EM4100	0.75mm ISO Card - EM4100	2mm NISO Card - EM4100



Access Granted



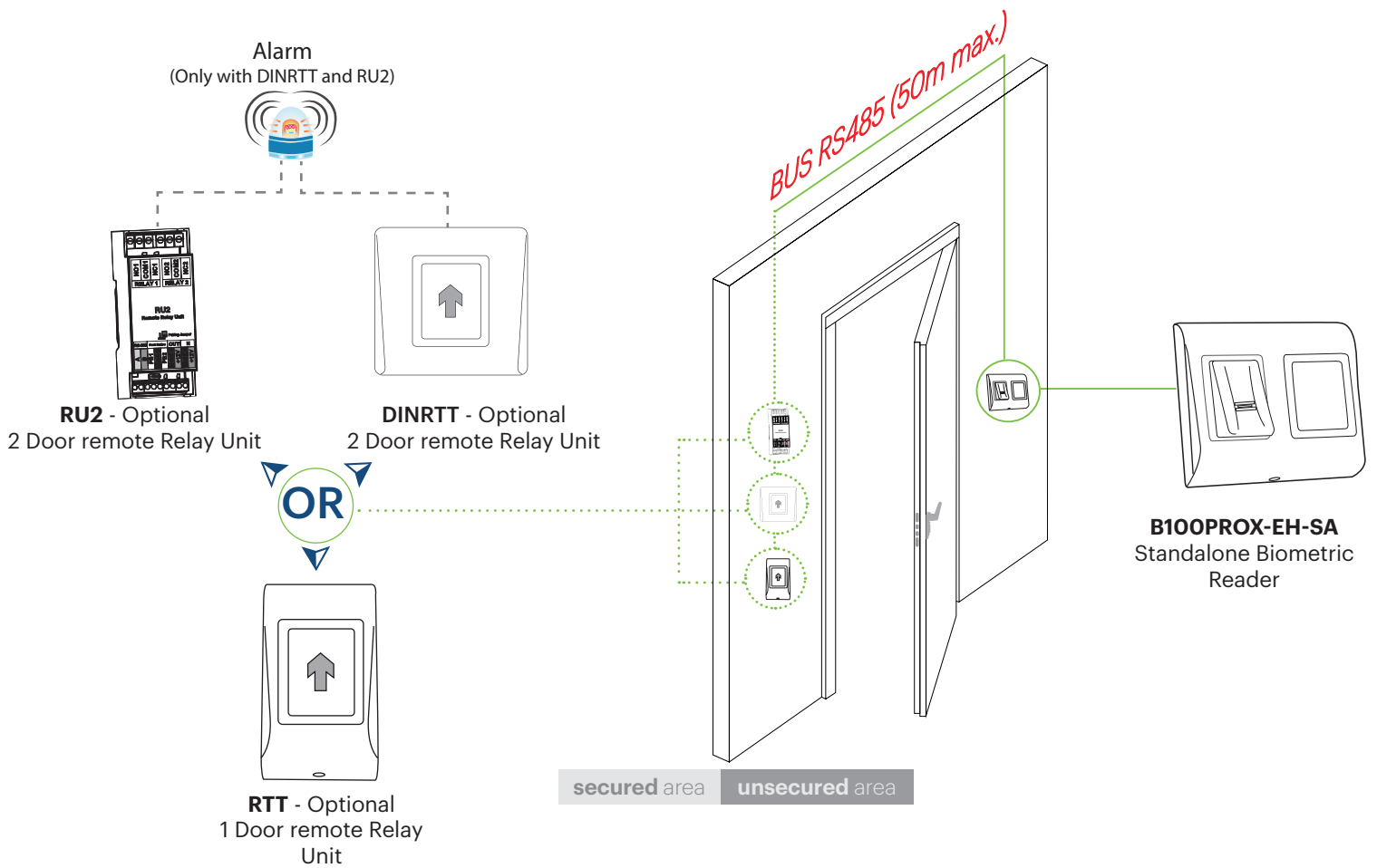
Idle Mode



Access Denied

Tricolor Indication uni-LED

WITH REMOTE RELAY AT SECURED AREA



All product specifications are subject to change without notice.