

# B100PAD-SA

SURFACE MOUNT STANDALONE BIOMETRIC READER WITH KEYPAD

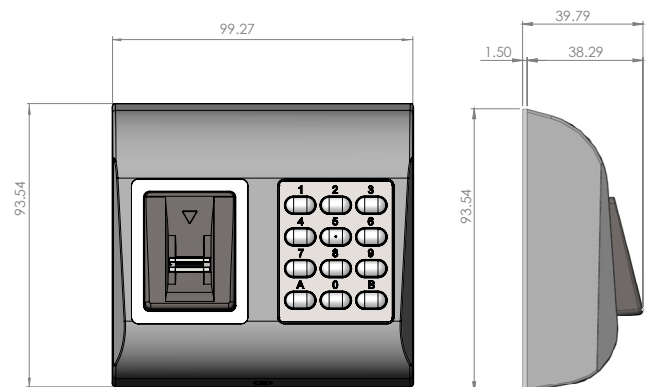
B100PAD-SA is a simple one-door standalone biometric system. The reader can store up to 100 finger templates (98 for users and 2 for programming), it has one relay output and one exit button input. If secure installation is needed, the reader can be connected to remote relay unit at secured area, which also plays the role of exit push button. Complete setup and programming can be done by swiping the finger on the sensor or via keypad.



## FEATURES

- Fingerprint Capacity: 100 finger templates (98 users, 1 Admin, 1 Installer)
- Output: 1 x Relay (2A /24V AC/DC)
- Push Button Input: Yes
- Door Open Time: Pulse (1 to 30 s) or Toggle (ON/OFF)
- Entry Mode: Finger or Access Code
- PIN Code length: 1 to 8 Digits
- Sensor: Swipe capacitive
- Programming: By Master finger or by keypad
- Admin/Installer Fingers: 1 Admin and 1 Installer
- Image resolution: Up to 508 DPI
- Backlight ON/OFF: Yes
- Buzzer ON/OFF: Yes
- Firmware upgrade: Via RS485 converter and Windows application
- Current Consumption: 150 mA max.
- Power Supply: 9-14 V DC
- Indication: Tricolor Status LED
- Mounting: Surface mount
- IP rating: IP65
- Operating Temperature: -20°C to +50°C
- Operating Humidity: 5-93% RH non-condensing
- Dimensions (mm): 100 x 94 x 30

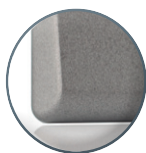
## DIMENSIONS



## COLOURS



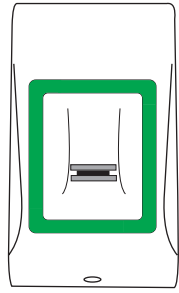
B100PADS-SA  
Silver



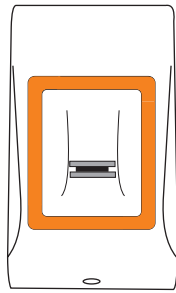
B100PADC-SA  
Charcoal



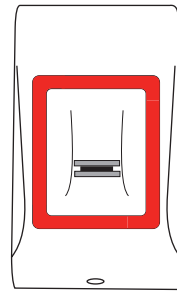
B100PADW-SA  
White



Access Granted



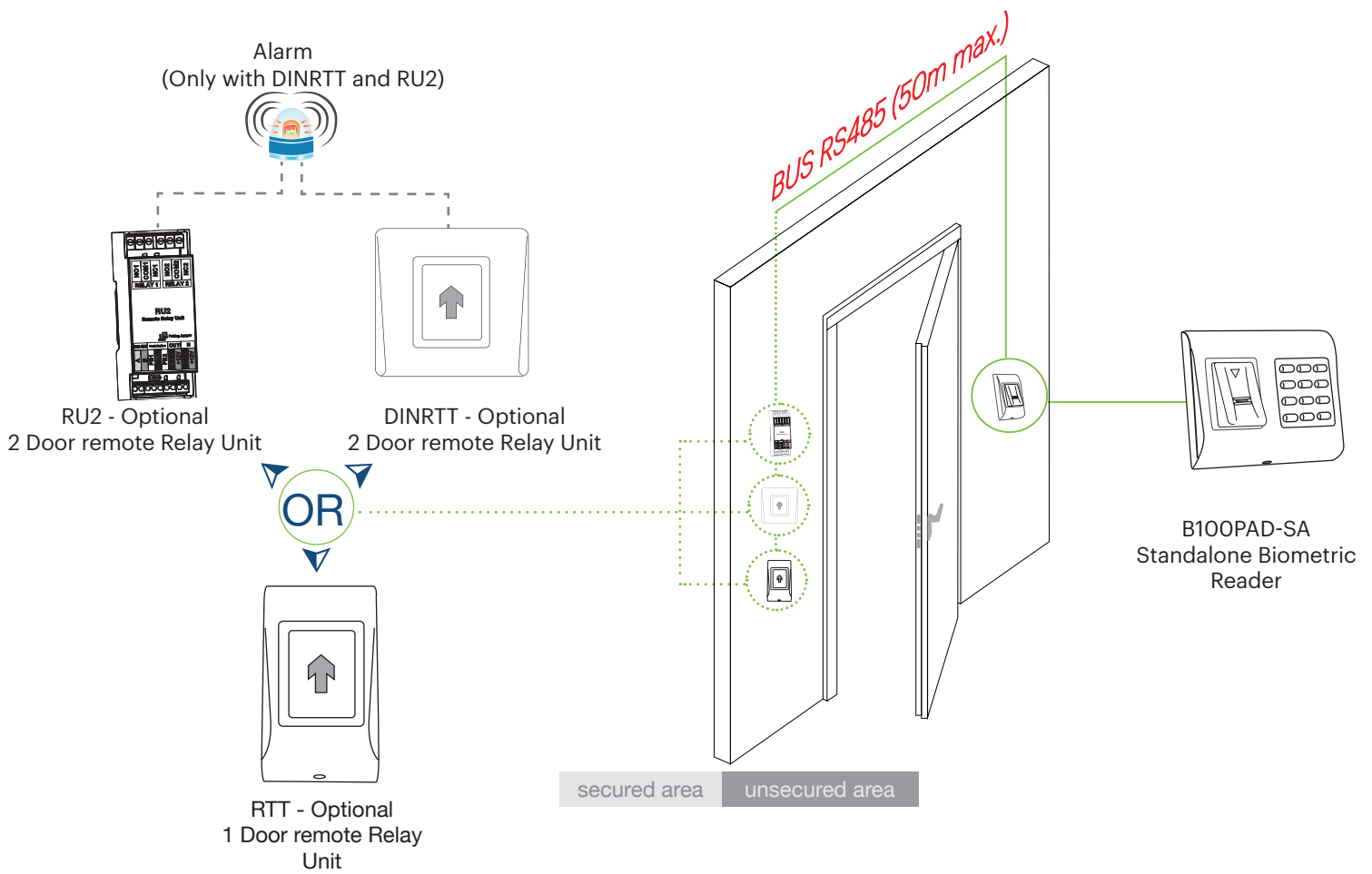
Idle Mode



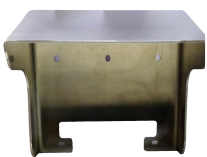
Access Denied

## Tricolor Indication uni-LED

### WITH REMOTE RELAY AT SECURED AREA



### ACCESORIES



#### MCD-MINI

Protection cover in A304 brushed steel for double Mini range reader.

Compulsory protection cover for external use.

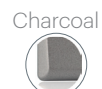


#### USPD

Surface mount double US gang metal plate.



USPDS



USPDC



USPDW

All product specifications are subject to change without notice.